

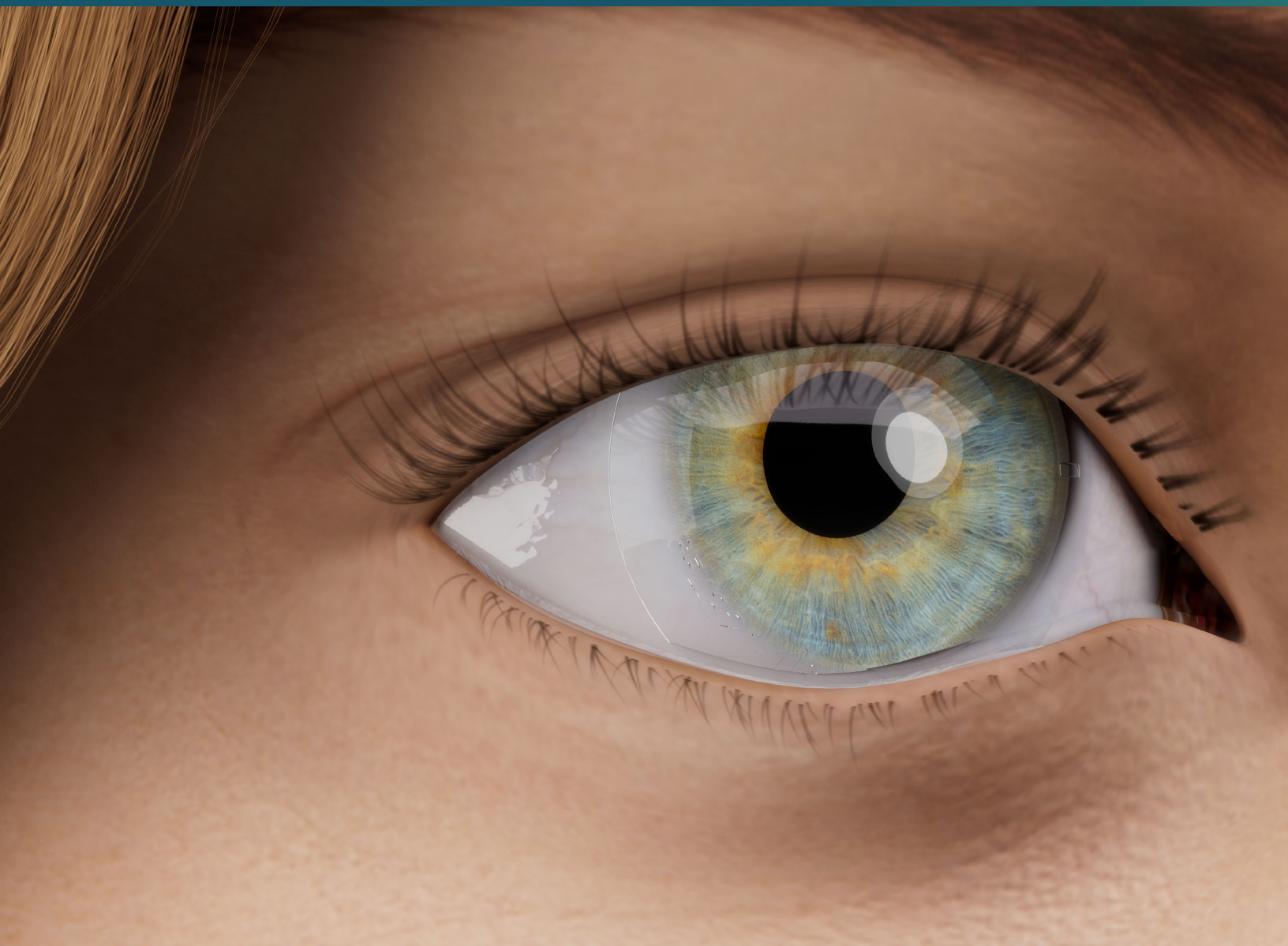
OUR COMPLEX DATA, YOUR STREAMLINED FITTING.

EXPLORE THE EUROPA TANGENT



Visionary Optics
uniquely **specialized** contact lenses

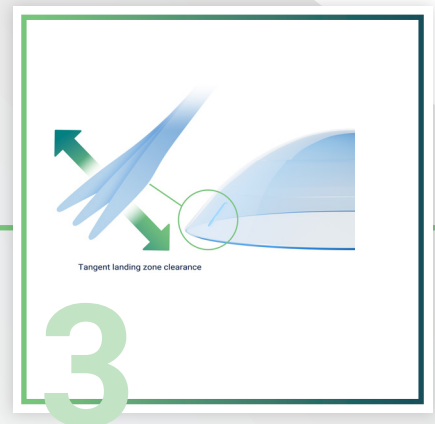
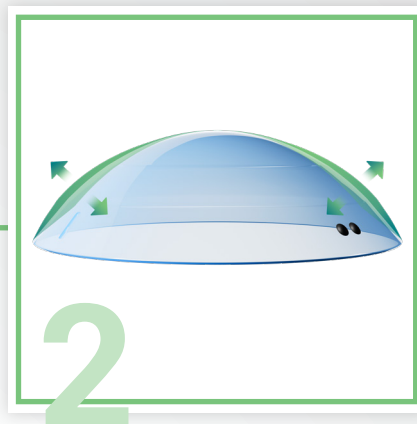
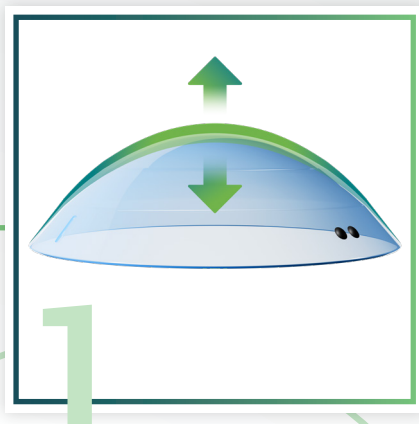
EUROPA
SCLERAL
STREAMLINED
TANGENT 



STREAMLINED **STEP-SYSTEM FITTING**

ADVANCED CUSTOMIZATION REMAINS AVAILABLE

- ✓ Toric & Multifocal Optics
- ✓ Diameter
- ✓ Quadrant-Specific
- ✓ Multi-Meridian
- ✓ Precision Lift & Notching
- ✓ HOA Correction
- ✓ Prism
- ✓ Center Thickness
- ✓ Fenestration



FIT SET

FULL RANGE OF PATIENTS



LESS LENSES = LESS CHAIRTIME!

There are 6 spherical & 6 toric lenses with two options of toricity available for initial fit - 200µ & 400µ.

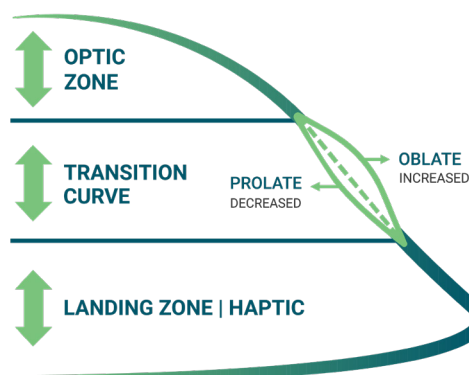
16.5 DIAMETER THAT'S FULLY CUSTOMIZABLE

The Europa Tangent diameter can be completely customized from a 15.0 to 22.0mm diameter!

Contour Curve Technology

The Tangent design's contour curve lives within the transition zone and can modify your fit into a prolate or oblate shape.

This enhancement is derived from profilometry data and allows optimization of patient's ocular health by fine tuning the fit over the limbus.



WHY VISIONARY OPTICS?

Visionary Optics is exclusively dedicated to scleral lens fitting, design, and manufacturing and is a leader in the industry with **over 20 years of experience**.

94%

SUCCESS RATE¹

Our commitment to you (including a risk-free warranty) is a successful scleral lens fit for you & your patients.

10,000+

PROFILOMETRY FITTINGS

We helped to develop the scleral shape classification system² that has been accepted by the worldwide scleral lens community.

1-2 DAY

TURNAROUND

Simplify your fitting process with personalized support. We understand your time is extremely valuable.



Visionary Optics has been an incredible lab to work with from day one. The lenses they design are incredibly well-made, and their customer service is 5-star. ”

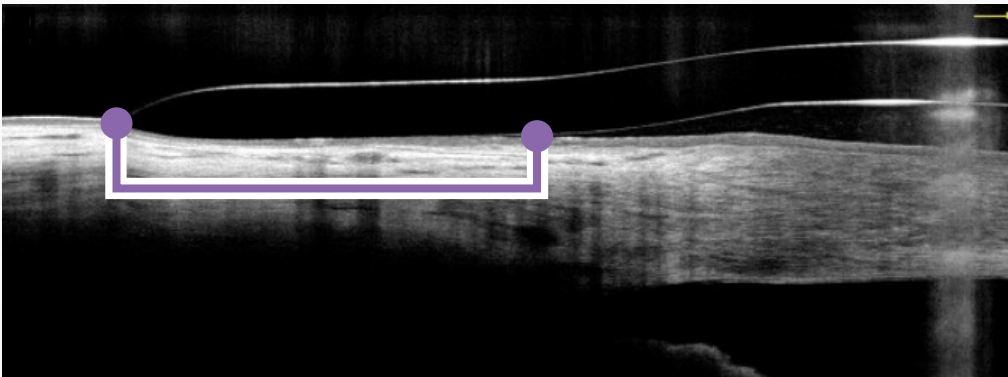
Stephanie Woo, OD
Contact Lens Institute of Nevada,

¹ - Based on internal company data 2021.

² - The SSSG J Cont Lens Res Sci Vol 1(1):12-22; November 16, 2017. © 2017

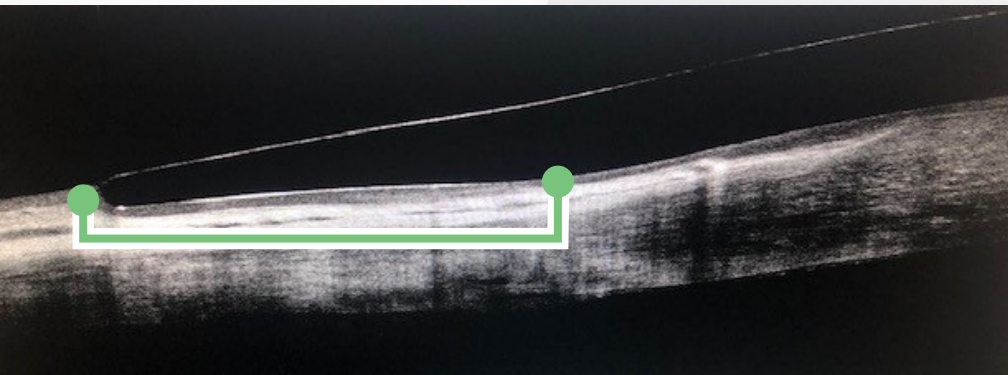
SOFTER, THINNER, ELONGATED,

LANDING PROFILE



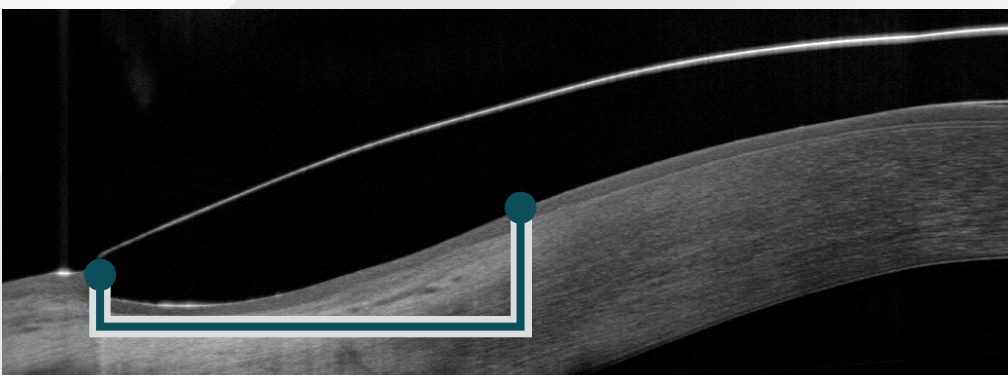
Latitude

Free-form, fully-customized, scleral lens designed using profilometry data.



Europa Tangent

Has one landing zone curve designed to follow the natural slope of the scleral surface and reduce compression & blanching.



Europa (Standard)

One of the most trusted products in scleral lens design with a four peripheral curve landing zone.

PATTERNED AFTER OUR *FREE-FORM DESIGN*

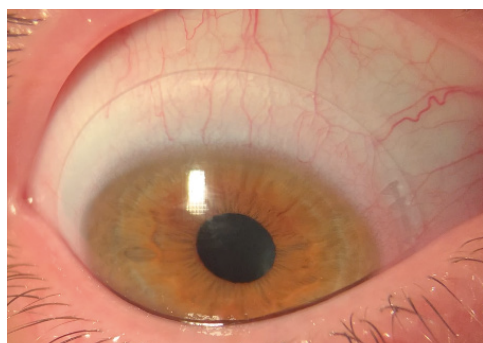
The Europa Tangent design offers a smoother, softer transition to the landing zone, patterned after Visionary Optics' freeform Latitude lens.

We developed our Tangent design fitting algorithm using our extensive and exclusive knowledge of scleral shape patterns² with the goal of continuously sharing our knowledge with our partnering doctors.

² - The SSSG J Cont Lens Res Sci Vol 1(1):12-22; November 16, 2017. © 2017

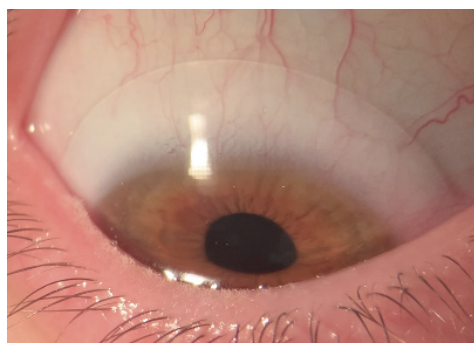


OUR KNOWLEDGE IS YOUR POWER



Europa (Standard)

16.0mm



Europa Tangent

16.5mm

COMPRESSION IS A COMPLICATION. LET THE EUROPA TANGENT HELP!

The Europa Tangent is designed to offer better overall patient comfort (less patient dropout!) & reduces suction from compression and settling throughout a full day's wear time (aids in easier removal).

STREAMLINE YOUR SUCCESS

SIMPLIFY YOUR FITTING PROCESS
WITH PERSONALIZED SUPPORT.



To learn more, scan the QR Code or visit
us at [Visionary-Optics.com/Welcome](https://www.visionary-optics.com/Welcome)

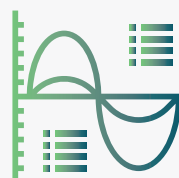
CUSTOMIZED FITTING DOES NOT NEED TO BE COMPLEX



STEP-SYSTEM
FITTING



PARAMETER
INDEPENDENCE



CONTOUR
ADJUSTING



SOFTER
LANDING ZONE

