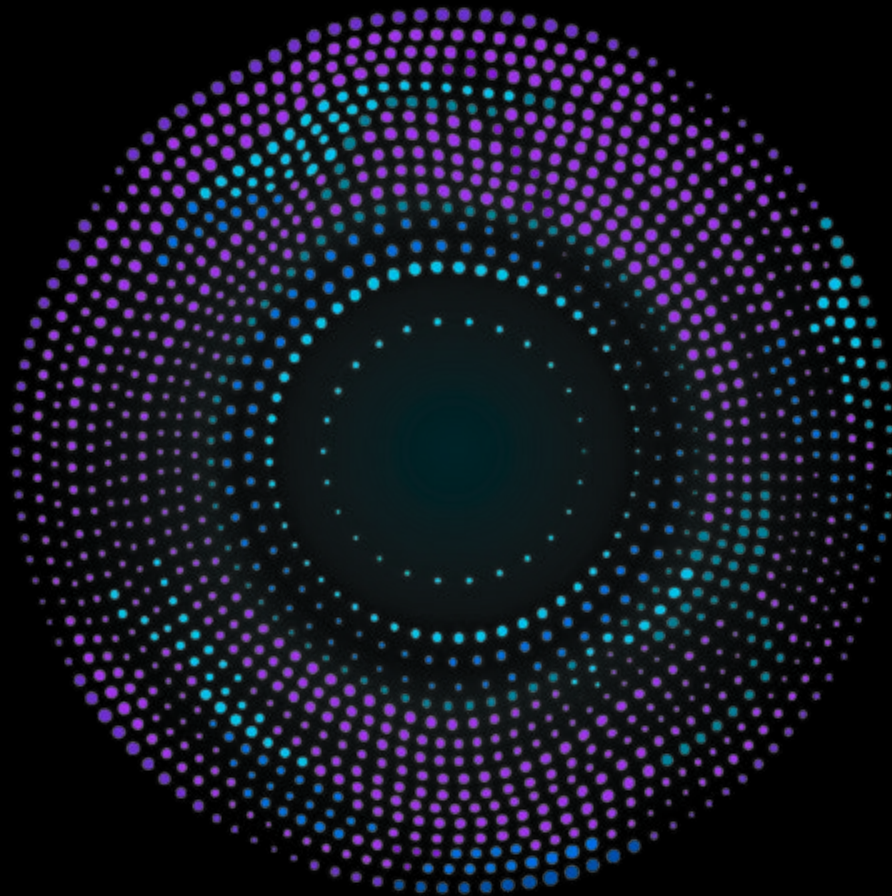


VISIONARY OPTICS

LATITUDE

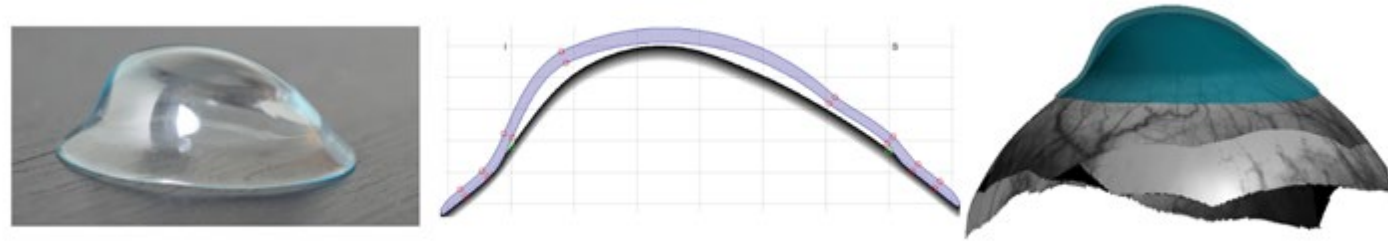
Freedom of Form



A NEW ERA IN
SCLERAL FITTING

CON
TOUR
ED

INTRODUCTION
LATITUDE DESIGN



UNIFORM CLEARANCES

The Latitude™ lens exactly conforms to the scleral shape at the landing zone and is designed to even out the central, mid-peripheral and limbal clearances regardless of the degree of corneal irregularity.

OCULAR HEALTH

This uniformity of Latitude™ lens to ocular surface clearance is critical to ocular surface health since it ensures that oxygenation to the cornea and limbus is optimized.

PATIENTS CORNEAL & SCLERAL SHAPES DO NOT CONFORM TO TRADITIONAL CURVE SYSTEMS, SO WHY SHOULD THEIR LENSES?



Visionary Optics has analyzed & designed lenses for over 5,000 eyes (& counting) using scleral shape data.



Did you know that 25% of your normal cornea patients require highly customized scleral lenses? ²



At least 65% of your irregular cornea patients require highly customized scleral lenses. ¹

¹ Qualitative Assessment of Scleral Shape Patterns The SSSG Study J Cont Lens Res Sci Vol 1(1):12-22; November 16, 2017. © 2017

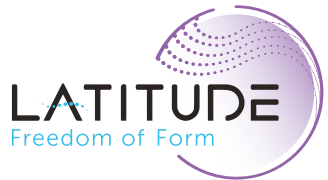
² Correlation of Corneal and Scleral Topography in Cases with Ectasias and Normal Corneas: The SSSG Study. J Cont Lens Res Sci Vo 3(1):e10-e20; May 9, 2019 @2019

CLINICAL
LATITUDE BENEFITS



Our **Europa Scleral** offers the most advanced customization available utilizing a pre-designed curve system.

Our **Latitude Scleral** exactly conforms to the scleral shape at the landing zone and is designed to have uniform central, mid-peripheral and limbal clearances.



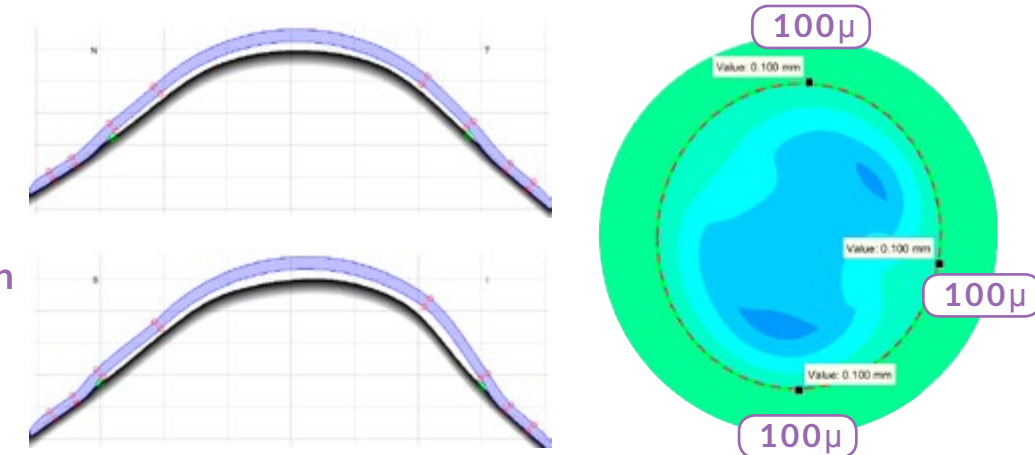
LATITUDE DESIGN

Uniform central clearance

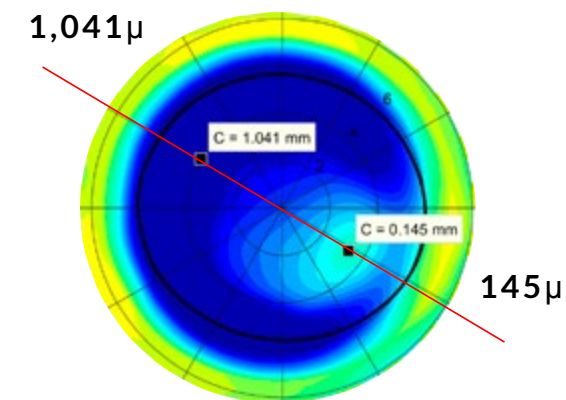
Uniform limbal clearance

Uniform oxygenation of ocular surface

Centered lens with decentered optics

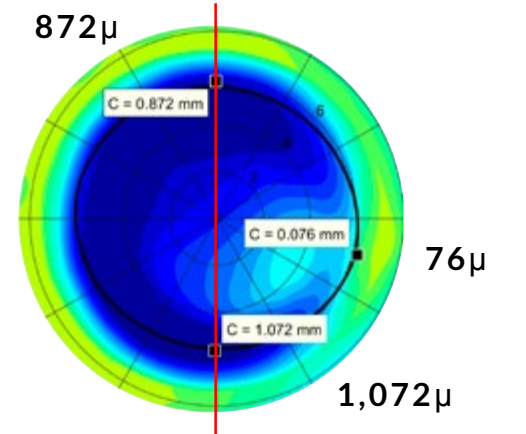


CORNEAL CLEARANCE (EUROPA)



Asymmetric, excessive superior corneal clearance inherent in pre-designed lenses.

LIMBAL CLEARANCE (EUROPA)



Asymmetric, excessive limbal clearance inherent in pre-designed lenses.

F R E Q U E N T Q U E S T I O N S

FAQS

Do I need an sMap3D to fit the Latitude lens?

Yes. There is no pre-determined curve system for the Latitude. The lens is designed completely from the sMap3D topography data (over 1 million points!). This lens cannot be empirically fit.

Who are the best candidates for this lens & why?

Technically, every patient could benefit from a Latitude lens. It offers a completely contoured, unique fit for each patient, improving upon comfort, vision and ocular health. Based on the fact that this is a premium lens design with added costs associated with it, it can be reserved for the more complicated fits involving a larger degree of irregularity. Cases with high amounts of scleral toricity, asymmetric cones, pingueculas, and cases who have not experienced success with other scleral lenses are just a few examples.

We are also seeing a link between corneal and scleral astigmatism that leads to excessive limbal clearance. These would be excellent candidates for the Latitude lens to offer more consistent and appropriate clearance over the limbus.

How do you evaluate a Latitude lens?

Just like any other scleral lens fit! You will finalize and troubleshoot as you normally do, however, you should expect to experience only minor adjustments being required, if any. Please see the '[How to Evaluate](#)' section for more detail.

How do I determine if I should fit a patient with a Latitude lens?

Some of our accounts have started to fit virtually all of their patients with Latitude lenses. Others prefer to directly indicate to Visionary Optics' sMap3D Consultants which patients they want to fit with the Latitude. Many decide based on our Consultant's recommendations.

Our Consultants analyze each patient's eye shape to determine whether a Latitude should be indicated. We will only process a Latitude after direct approval from the Doctor (or staff). If a Doctor prefers to use a Europa lens, we design the most advanced Europa as possible, with the understanding that the pre-designed curve system cannot fully address the asymmetry that is inherent in scleral lens fits using a Europa or any other scleral lens design available at this time.

G O L D E N R U L E S

THINGS TO KNOW

LATITUDE LENSES CAN ONLY BE DESIGNED WITH SMAP3D SCLERAL TOPOGRAPHY DATA. THIS UNIQUELY CONTOURED DESIGN ALLOWS FOR AN EXACT FIT TO THE CORNEAL AND SCLERAL SURFACES.

IMPORTANT REMINDERS

An in-office fitting evaluation should always be completed on these highly customized Latitude lenses. **We strongly recommend that Latitude lens evaluations are completed in-office.** We do not recommend sending directly to patient (initial dispense).

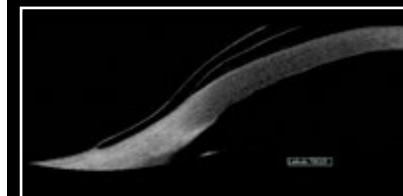
The Latitude has no pre-designed specifications. It relies solely on the sMap3D data to contour to the eye. **Please take the time to obtain a good exam, ensuring as optimal coverage as possible.** Missing data is not optimal when designing the Latitude to match all clearances.

Please note that Latitude lenses are designed to fit every contour of your patient's sclera. They will fit less tightly than a standard len design. **This could give a previous scleral lens wearer initial awareness which will dissipate with settling.**

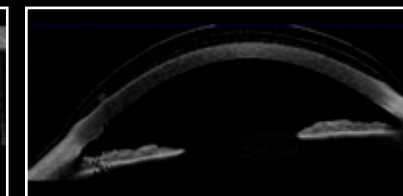
No scleral lens wear prior to mapping! The compression on the conjunctiva of a recently removed scleral lens will alter the surface fit of the Latitude lens. We make every attempt to compensate, but this is not ideal & should be avoided when possible.

“Note how nicely the lens vaults over the limbus and how long and thin the landing zone is. Very impressive.”
Edward Boshnick, OD, FLORIDA

NOTE THE LONG, THIN LANDING ZONE



NOTE THE EVEN VAULT



NOTE THE LONG, THIN LANDING ZONE



READY TO GO
HOW TO FIT

STEP 1

(s)Map your patient

Efficient & non-invasive mapping:
3-5 minute exam,
3 gazes (straight, down, up) resulting
in 1 final, stitched image.

STEP 2

Perform Over-refraction

Simply select a fitting set lens
(software suggests best lens) or the
patient's own previous lens, place it
on the eye and refract.

SUBMIT THE ORDER - THAT'S IT!

Our sMap3D Expert Consultants will do the rest!

Visionary Optics' Consultants download, review and analyze your patient's
sMap3D data to design the best possible lens for each of your patients.

WARRANTY

90-DAY RETURN POLICY
LIMIT OF 2 REMAKES



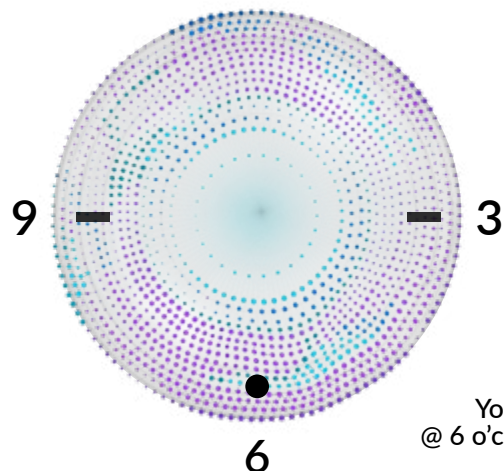
BY REQUEST

ALL INCLUSIVE PRICING
TANGIBLE HYDRA-PEG
OPTIMUM INFINITE DX 200+

LATITUDE LENS MARKINGS

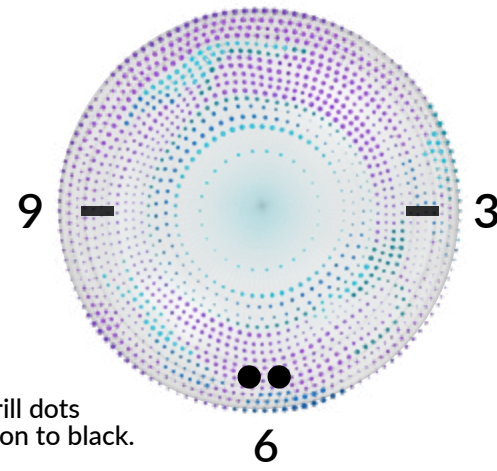
RIGHT EYE

Insert the right (OD) lens with the (1) black dot
at the bottom (around 6 o'clock)



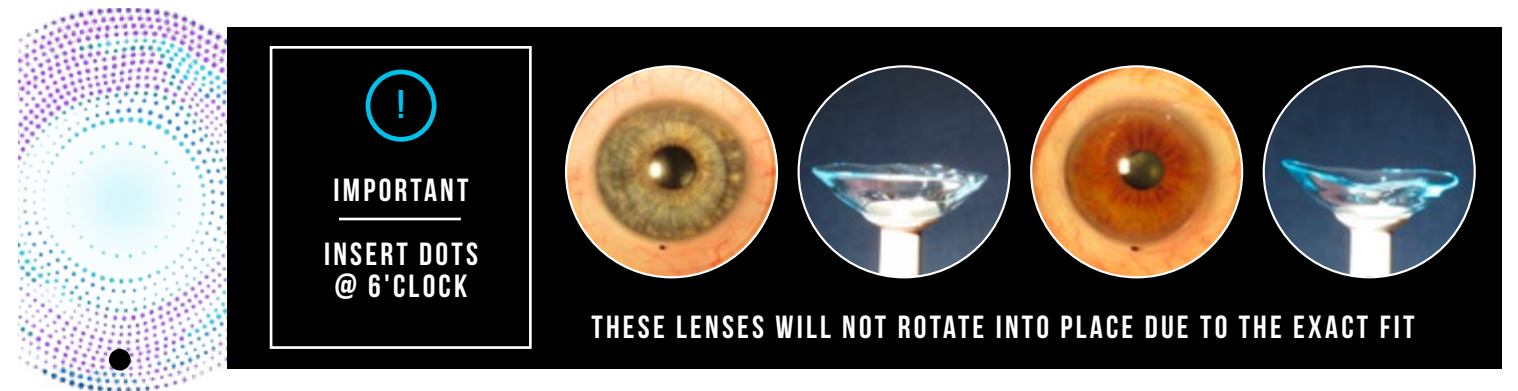
LEFT EYE

Insert the left (OS) lens with the (2) black dots
at the bottom (around 6 o'clock)



You may request white drill dots
@ 6 o'clock as alternative option to black.

READY TO GO
HOW TO EVALUATE



CLEARANCES

Evaluate central and limbal
clearances just like any other scleral
lens fit.

Do you require more or less vault?
By approximately how many microns
(we recommend steps of 50-100µ)?

HAPTIC

When needed, our Latitude haptic
can be adjusted sectorally or 360°. The
Latitude's haptic is fit using
surface tension with little to no
compression. There might be some
movement at initial dispense. This
will almost always settle with no
adjustments required.

POWER | MATERIALS

Do you have an OR that needs to be
incorporated?

Reminder that we can include
Optimum Infinite Dx 200+ and
Hydra-PEG at no additional cost.

HAVE ANSWERS (PLEASE)

Were patients out of previous lens
long enough (if wearing a scleral)?

How is patient comfort in areas of
requested adjustment?

Where are the orientation marks?

**PATIENTS SHOULD BE OUT OF THEIR SCLERAL LENSES FOR:
MINIMALLY 2-3 DAYS, OPTIMALLY 1 WEEK**

PATIENTS CORNEAL & SCLERAL SHAPES DO NOT CONFORM TO TRADITIONAL CURVE SYSTEMS, **SO WHY SHOULD THEIR LENSES?**

MAIN OFFICE

1325 Progress Drive
Front Royal, VA 22630

MANAGEMENT OFFICE

386 N. York Rd.
Suite 202
Elmhurst, IL 60126

PHONE & FAX

ph: (877) 533-1509
fax: (530) 635-8846

WEB & EMAIL

service@visionary-optics.com
www.visionary-optics.com

LIKE US (We sure like you!)



Caution: Federal Law Prohibits Dispensing Without Prescription
L4 v10.0 ©2019 Visionary Optics, LLC