



sMap 3D

let our data be your guide

EVERY ONE OF OUR LENSES IS A WORK OF SCIENCE

One million measurement points. Only one scleral lens company - and one device - offers that level of technological precision for mapping the shape of the eye. Featuring 360-degree coverage and 10-micron precision, the sMap3D corneo-scleral topographer captures highly detailed maps of the cornea and sclera. The data collected informs the design of our totally customizable scleral lenses.

The only thing that cannot be measured is how drastically the sMap3D has improved the fitting process for our partners.

“It has transformed my scleral lens practice. It is one of the most impressive technologies that I have ever placed into my practice over a 50-year period.

Edward Boshnick, OD, FLORIDA

Measurement is the necessary next step for improving fitting efficiency and customization, which ultimately leads to improved success.

Greg DeNaeyer, OD, OHIO

We invested in the sMap3D technology in Sept 2016 and since then we've had absolutely unmatched success with scleral lenses. Honestly, we don't know what we did without Visionary Optics. Joshua Pass, OD, TEXAS

[Dr. Pass now has (2) sMap3D instruments]

The sMap3D is a game changer for me in fitting scleral lenses. By having more precise fitting lenses, my patients experience less foggy vision, increased comfort, and greater confidence in me as a doctor. In addition, it has cut my remakes in half & saved me so much time.

Thanh Mai, OD, CALIFORNIA

SCLERAL LENS FITTING: KNOWLEDGE & DATA-DRIVEN SCIENTIFIC PROCESS WITH MORE PREDICTABLE RESULTS

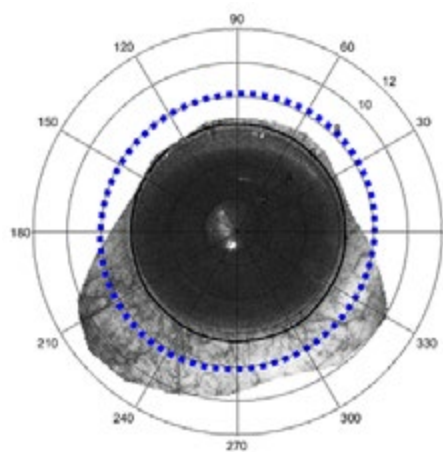
Why is a multi-gaze stitch necessary?

Accurate **sag** and **scleral toricity** values are critical to optimal scleral lens fit. These must be obtained out to the diameter of the lens (16mm).

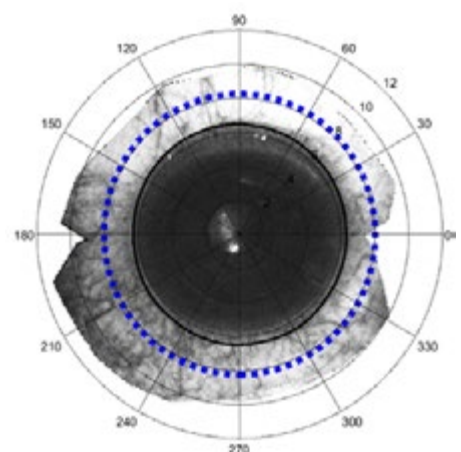
These measurements cannot be obtained with a single gaze image.

You will not obtain accurate data!

The use of the straight gaze only (only one image) frequently provides insufficient superior and inferior scleral coverage to accurately measure the full surface of the eye out to the diameter of the scleral lens.

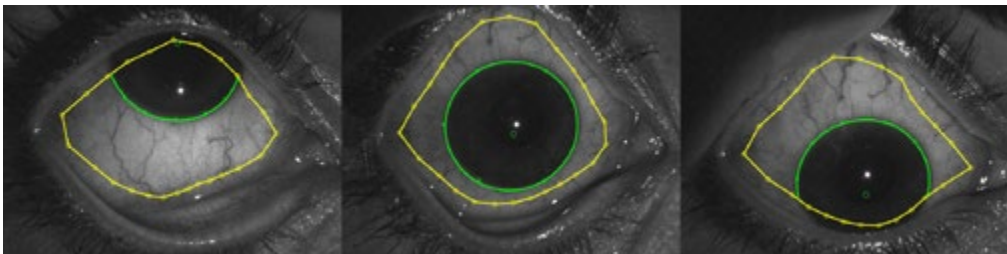


SINGLE GAZE, ONLY



sMap3D STITCHED IMAGE

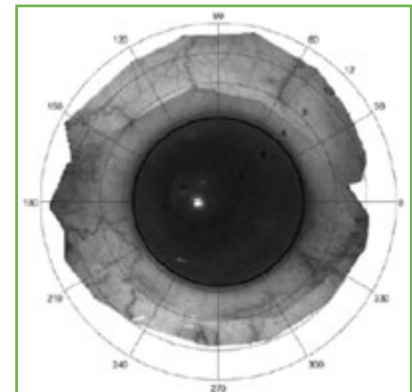
Utilizing the proprietary stitching algorithm, the sMap3D combines multiple gaze directions into a complete model of the ocular surface, minimizing eyelid interference. Map the entire cornea and sclera, with a true range of greater than 22mm diameter, 360° around.



UP GAZE

STRAIGHT GAZE

DOWN GAZE



THE SCIENCE BEHIND OUR sMap3D LENSES

Seamless integration with our scleral lenses is designed to minimize refits by prescribing lenses directly from surface measurements and based on user-input requirements. View virtual fits and customize lens parameters with the goal of achieving optimal fits for every eye in one platform.

2D Lens Elevation

Showing a virtual lens fit over the eye. Blue is vault; yellow is even 360° landing.

3D Lens Elevation

Sideview of the lens (purple) vaulting over the cornea & limbus with a toric haptic landing.

Fluorescein Sim

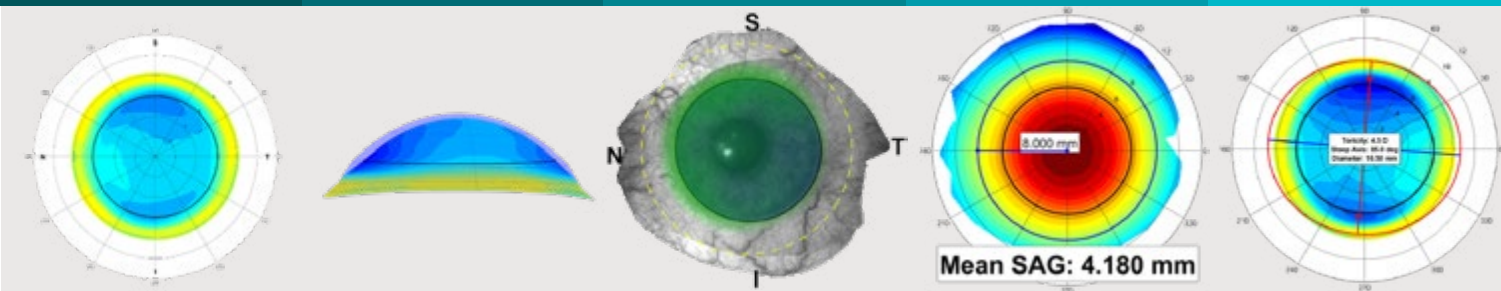
Fluorescein simulation showing the lens on the eye; including limbal clearance.

Sag Height

Displaying the sag of the eye at a 16mm diameter. View sag at any diameter & at individual points.

Scleral Toricity

Displaying exactly how much (503 μ) toricity and location (85°) of the steep axis.



YOU PROVIDE THE MEASUREMENTS, WE DESIGN THE LENS



Our support is all about you and how much (or how little) you want to independently modify parameters.

This consult button in the sMapPro software provides you with complete access to our expert sMap3D Consultants and we're always happy to do the heavy lifting.

OUR NEW

LATITUDE LENS

completely contoured

unlimited possibilities

COMING SOON

READY TO CHANGE THE WAY YOU FIT SCLERAL LENSES?

Your sMap3D Purchase includes:

- sMap3D Instrument, sMapPro software, Touch Screen Laptop
- Complimentary Fitting Set (for over-refraction purposes)
- All-Inclusive Pricing
- 1-Year Warranty (Extended Warranty packages available)
- All Software Updates
- Comprehensive Training & Installation
- In-depth Technical Support
- Optical Instrument Table (Optional, additional charges apply)
- Our Expert sMap3D Consultation Team & Lens Designers



smapconsult@visionary-optics.com

ph: (877) 533-1509

fax: (530) 635-8846



@Europascleral

@sMap3D

www.visionary-optics.com



Caution: Federal (USA) Law restricts this device to sale by or on the order of a licensed practitioner.
Visionary Optics is the exclusive U.S. Distributor of the sMap3D Instrument.